

MONTHLY MEMBERSHIP PROGRESS REPORT

LOCATION HAWAII

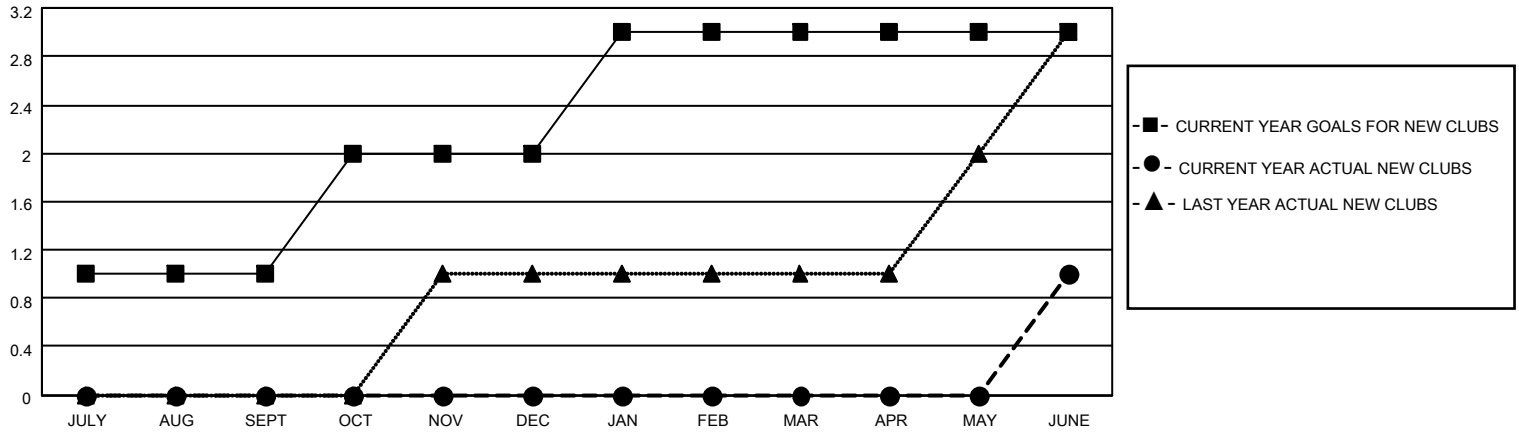
District 50

Results as of: 6/30/2023

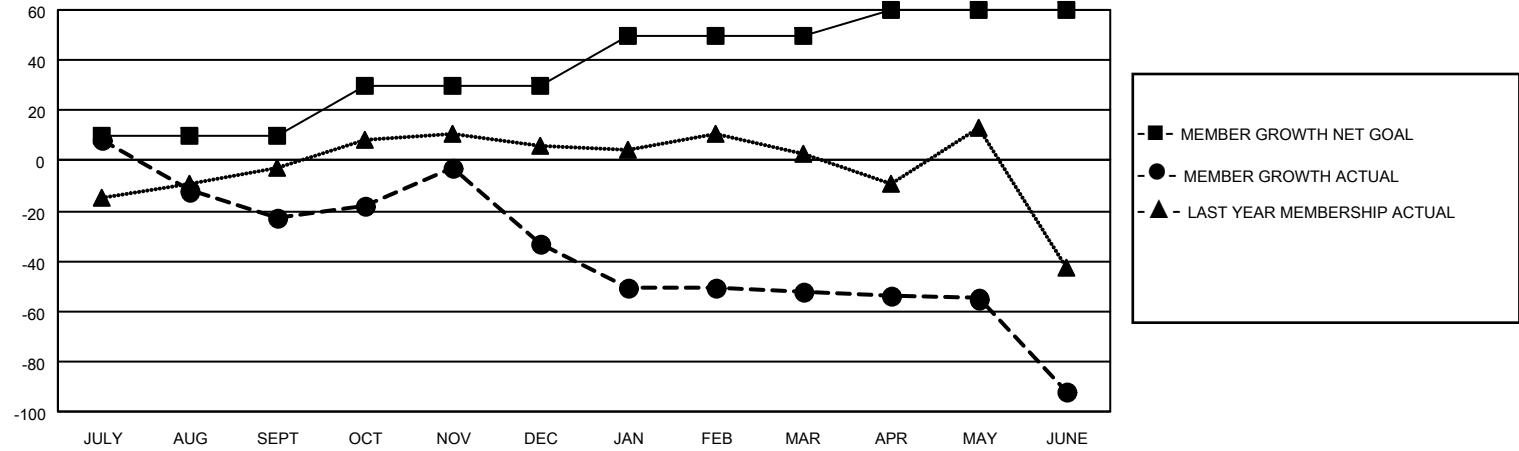
Clubs			
RESULTS FOR 2022-2023			
QUARTER	NEW CLUB GOAL	NEW CLUBS	DROPPED CLUBS
JULY/AUG/SEPT	1	0	0
OCT/NOV/DEC	1	0	2
JAN/FEB/MAR	1	0	0
APR/MAY/JUNE	0	1	0

Members			
RESULTS FOR 2022-2023			
QUARTER	MEMBER GROWTH NET GOAL	MEMBER GROWTH ACTUAL	DROPPED MEMBERS ACTUAL (including transfers)
JULY/AUG/SEPT	10	49	62
OCT/NOV/DEC	20	59	63
JAN/FEB/MAR	20	38	50
APR/MAY/JUNE	10	50	80

GOALS AND ACTUAL NEW CLUBS CUMULATIVE



GOALS AND ACTUAL MEMBERS CUMULATIVE



DROPPED CLUBS: 2	
DROPPED MEMBERS	
DECEASED	23
CLUB CANCELLED	12
OTHER	223
TOTAL	258

41 CLUBS OF 58 ADDED 1 OR MORE NEW MEMBERS

[CLICK HERE FOR CUMULATIVE MEMBERSHIP DATA](#)

<u>GENDER DISTRIBUTION</u>	
MALE	794 (54.09%)
FEMALE	673 (45.84%)
NON BINARY	0 (0.00%)
PREFER NOT TO ANSWER	1 (0.07%)
TOTAL FAMILY UNIT MEMBERS	254
FAMILY MEMBERS PAYING HALF DUES	138